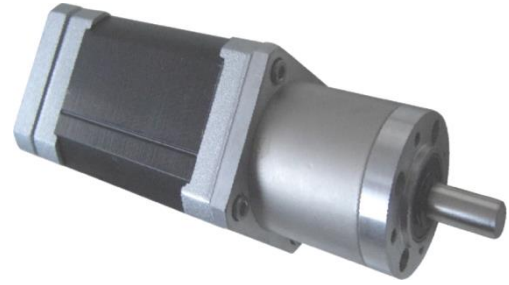


Brushless DC Gearmotor

42BLF PAG Series

BLDC Motor with Planetary Gear Box



General Specifications

Winding Type	Star
Hall Effect Angle	120° Electrical Angle
Insulation Class	B
Ambient Temperature Range	-20°C ~ +50°C
Insulation Resistance	100 MΩ Min. 500 VDC
Dielectric Strength	600 VAC 1 minute

Customized solutions on request.



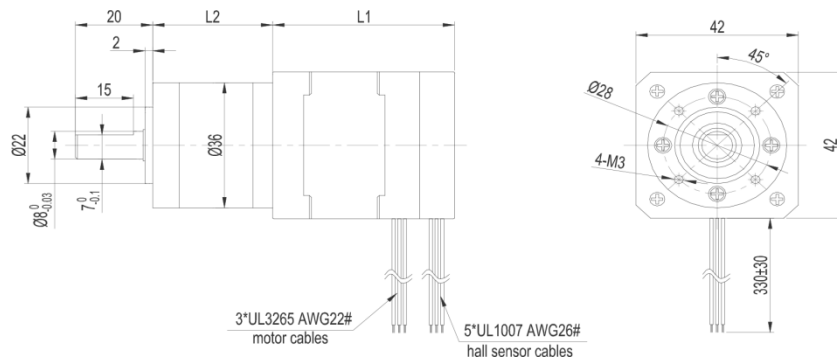
Electrical Specifications

Model	Number of Poles	Number of Phases	Rated Voltage	Rated Speed	Rated Torque	Rated Current	Output Power	Body Length	Mass
			VDC	RPM	Nm	A	W	L1(mm)	kg
42BLF01AG	8	3	24	4000	0.063	2.0	26	47	0.33
42BLF02AG	8	3	24	4000	0.125	3.5	52	63	0.48
42BLF03AG	8	3	24	4000	0.188	6.0	78	79	0.79

Gear Box Data

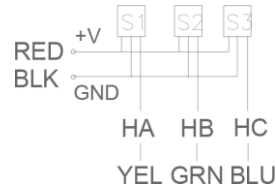
Reduction Ratio	4	5	13	19	27	51	71	100	139
Exact Reduction Ratio	$3\frac{12}{17}$	$5\frac{2}{11}$	$13\frac{212}{289}$	$19\frac{38}{187}$	$26\frac{103}{121}$	$50\frac{4397}{4913}$	$71\frac{524}{3197}$	$99\frac{1044}{2057}$	$139\frac{184}{1331}$
Number of Gear Train	1		2		3		3		
Max. Permissible Torque	2		2.5		3		3		
Moment Permissible Torque	4		5		6		6		
Gear Box Length(L2) mm	31		39		46.5		46.5		

Mechanical Dimensions



Connection diagram

Hall Sensor Cable



Wiring Cable



Note: Hall Sensor Power Supply voltage +5 to +20 VDC

Brushless DC Gearmotor

