

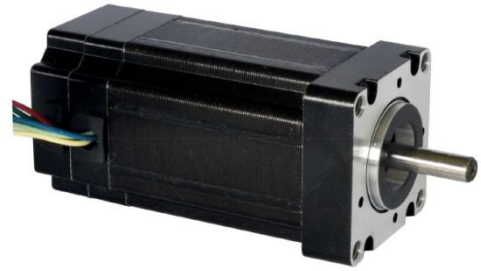
# Brushless DC Motor

## 42BLFX Series

### General Specifications

Winding Type	Star
Hall Effect Angle	120° Electrical Angle
Insulation Class	B
Ambient Temperature Range	-20°C ~ +50°C
Insulation Resistance	100 MΩ Min. 500 VDC
Dielectric Strength	500 VAC 1 minute

**Customized solutions on request.**

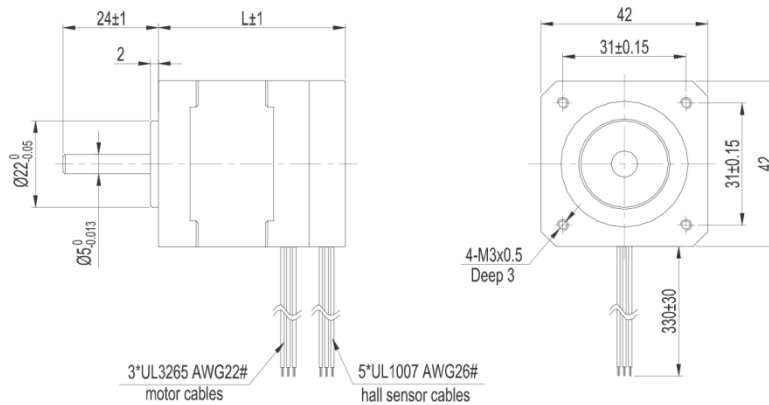


### Electrical Specifications

Model		42BLFX01	42BLFX02
Number of Poles		8	8
Number of Phases		3	3
Rated Voltage	VDC	48	48
Rated Speed	RPM	4000	4000
Rated Torque	Nm	0.12	0.2
Rated Current	A	1.2	2.1
Output Power	W	50	84
Peak Torque	Nm	0.36	0.6
Peak Current	A	3.6	6.3
Torque Constant	Nm/A	0.108	0.104
Back EMF	V/KRPM	11.3	10.9
Rotor Inertia	gcm <sup>2</sup>	62	123
Body Length	mm	59	84
Mass	kg	0.35	0.5

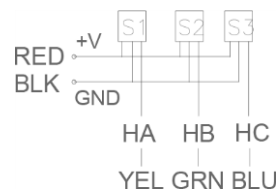
Caution: Peak Torque is provided for the purpose of performance calculations only. Operating near, or at this condition can result in motor damage.

### Mechanical Dimensions



### Connection diagram

#### Hall Sensor Cable



#### Wiring Cable



Note: Hall Sensor Power Supply voltage +5 to +20 VDC

# Brushless DC Motor

