

Brushless DC Motor

57BLF Series

General Specifications

Winding Type	Star
Hall Effect Angle	120° Electrical Angle
Insulation Class	B
Ambient Temperature Range	-20°C ~ +50°C
Insulation Resistance	100 MΩ Min. 500 VDC
Dielectric Strength	700 VAC 1 minute

Customized solutions on request.

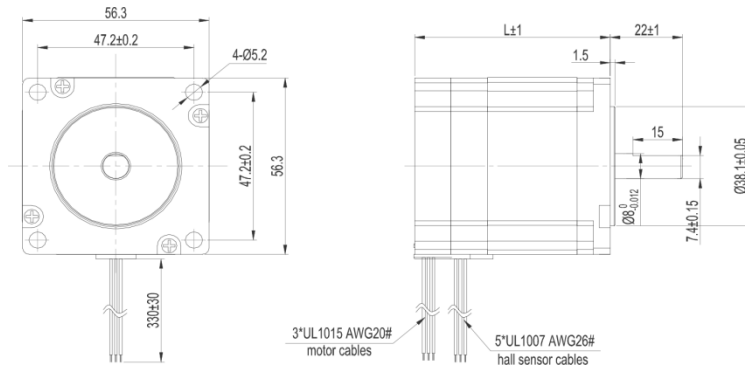


Electrical Specifications

Model		57BLF01	57BLF02	57BLF03	57BLF04
Number of Poles		8	8	8	8
Number of Phases		3	3	3	3
Rated Voltage	VDC	24	24	24	24
Rated Speed	RPM	3000	3000	3000	3000
Rated Torque	Nm	0.2	0.4	0.6	0.8
Rated Current	A	4	7.8	12	15
Output Power	W	63	125	188	250
Peak Torque	Nm	0.6	1.2	1.8	2.4
Peak Current	A	12	23.5	36	45
Torque Constant	Nm/A	0.065	0.066	0.066	0.066
Back EMF	V/KRPM	6.23	6.3	6.3	6.3
Rotor Inertia	gcm ²	120	170	220	270
Body Length	mm	59	80	101	122
Mass	kg	0.65	1.0	1.4	2.0

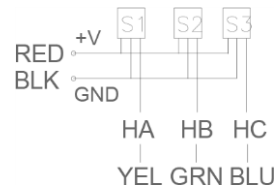
Caution: Peak Torque is provided for the purpose of performance calculations only. Operating near, or at this condition can result in motor damage.

Mechanical Dimensions



Connection diagram

Hall Sensor Cable

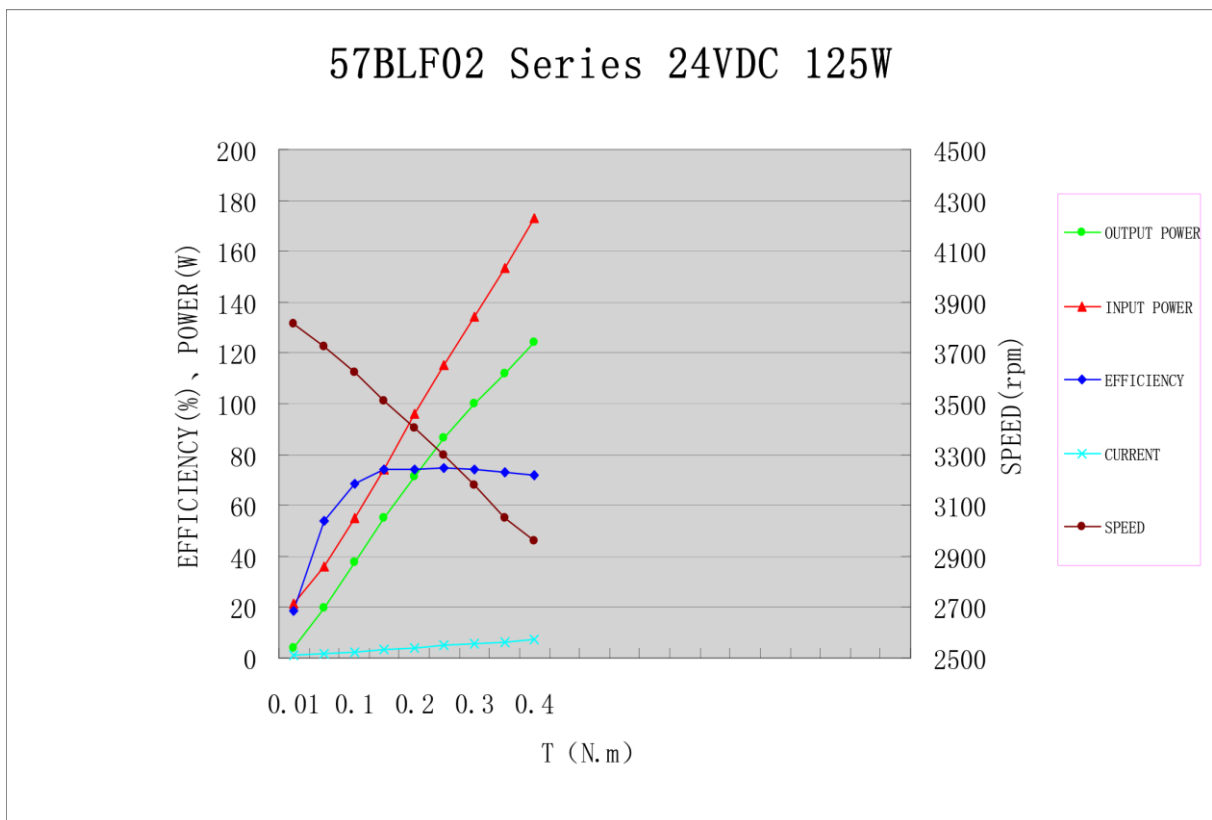
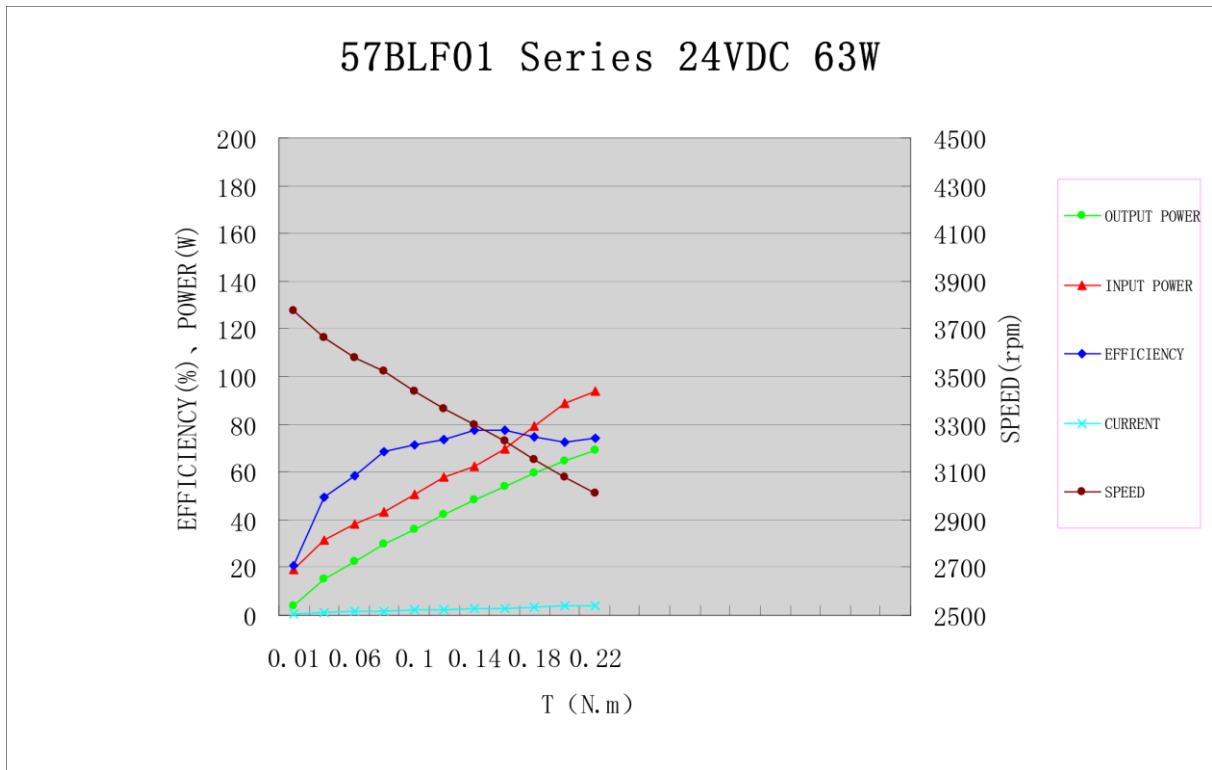


Wiring Cable



Note: Hall Sensor Power Supply voltage +5 to +20 VDC

Brushless DC Motor



Brushless DC Motor

