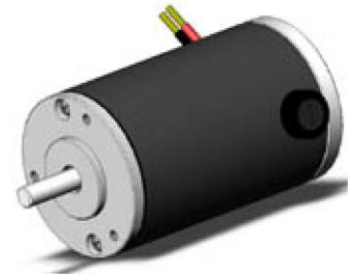


# PM DC Motor

## 63ZY Series



### General Specifications

Insulation Class	B 130°C/F 155°C
Operating Temperature Range	-5°C ~ +50°C
Environment Temperature	20°C±2°C
Environment Humidity	65%±5%RH
Protection	IP00
Installation	IMB14/IMB5
Choose Components	Magnetic Encoder

**Customized solutions on request.**



### Electrical Specifications

Model	Rated Voltage	No-load Speed	No-load Current	Rated Speed	Rated Current	Rated Torque	Rated Power	Length L
	VDC	rpm	A	rpm	A	mNm	W	mm
63ZY12-001	12	5000	1.8	4000	7.5	140	56	100
63ZY90-001	90	3500	0.12	2900	0.7	135	40	100
63ZY220-002	220	4000	0.05	3200	0.3	130	43	100
63ZY12-002	12	4300	2	3500	9	200	72	120

### Mechanical Dimensions

