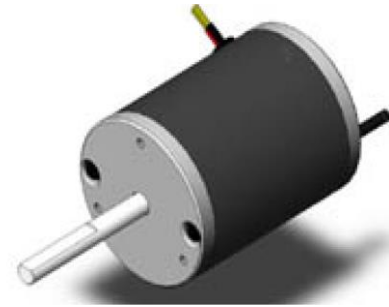


PM DC Motor

76ZY Series



General Specifications

Insulation Class	B 130°C/F 155°C
Operating Temperature Range	-5°C ~ +50°C
Environment Temperature	20°C±2°C
Environment Humidity	65%±5%RH
Protection	IP00
Installation	IMB14/IMB5
Choose Components	Magnetic Encoder

Customized solutions on request.



Electrical Specifications

Model	Rated Voltage	No-load Speed	No-load Current	Rated Speed	Rated Current	Rated Torque	Rated Power	Length L
	VDC	rpm	A	rpm	A	mNm	W	
76ZY12-001	12	4800	1.5	3800	13.2	250	99	97
76ZY24-001	24	3200	0.7	2600	4	230	62	97
76ZY24-002	24	3600	0.8	2800	7.5	400	115	112
76ZY100-001	100	2400	0.15	1900	1.3	400	79	112
76ZY24-003	24	3000	0.5	2500	9.7	600	155	137
76ZY220-001	220	3700	0.08	3000	1	450	140	137

Mechanical Dimensions

