

# DC Gear Motor

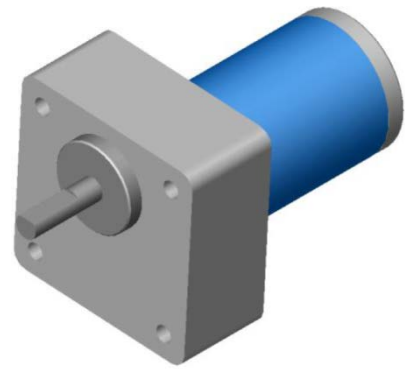
## DC2445PA-42+Z69

### Spur Gear Motor

#### General Specifications

□69 mm  
24 VDC  
588.4 mNm

*Customized solutions on request.*



#### Electrical Specifications

Part number	Model	Nominal Voltage	No-load Speed	Rated Speed	Rated Torque	Rated Current
		VDC	rpm	rpm	mNm	A
690001	Z692445-10B	24	415	110	73.5	0.30
690002	Z692445-15B	24	277	42	147.1	0.33
690003	Z692445-20B	24	207	18	294.2	0.32
690004	Z692445-30B	24	138	12.5	490.3	0.32
690005	Z692445-40B	24	104	10	294.2	0.16
690006	Z692445-50B	24	83	135	78.5	0.20
690007	Z692445-78B	24	53	56	147.1	0.30
690008	Z692445-96B	24	43	25	588.4	0.35
690009	Z692445-125B	24	33	15	294.2	0.10

Typical values at ambient temperature of approx. 20°C. Tolerance ±10%.

#### Mechanical Characteristics

Model	Gear ratio	Rotation dir.	Weight
	<i>i</i>	CW/CCW	<i>g</i>
Z692445-10B	10:1	CCW	785
Z692445-15B	15:1	CCW	785
Z692445-20B	20:1	CCW	785
Z692445-30B	30:1	CCW	785
Z692445-40B	40:1	CW	795
Z692445-50B	50:1	CW	795
Z692445-78B	78:1	CW	795
Z692445-96B	96:1	CW	795
Z692445-125B	125:1	CW	795

Direction of rotation viewed from output shaft side.

Operating Voltage Range 12 – 24 VDC  
 Operating Temp. Range +10°C - +60°C  
 Shaft End Play 0.5 mm Max  
 Spur Gears Brass/Steel Gears  
 Output Bearing Std: Ball Bearing  
 Options: Ferrobronze Sleeve Bearings

Customized motor specification and shaft design available.

#### Mechanical Dimensions

