

DC Gear Motor

P27ZFZ310

DC Gear Motor

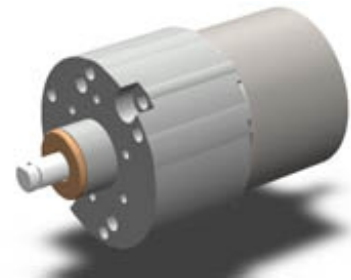
General Specifications

Ø27.8 mm

12 VDC

58.8 mNm

Customized solutions on request.



Electrical Specifications

Model	Voltage	No-load Current	No-load Speed	Rated Current	Rated Speed	Rated Torque	Max. Momentary Tolerance Torque	Gear Ratio
	VDC	A	rpm	A	rpm	mNm		
P27ZGZ310-1237-141	12	0.02	37	0.07	30	58.8	2000	1:141

Typical values at ambient temperature of approx. 20°C. Tolerance ±10%.

Mechanical Dimensions

