

DC Gear Motor

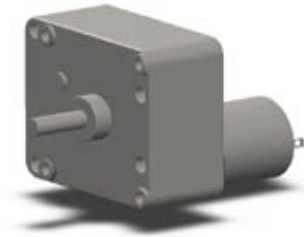
P80ZGP555

DC Gear Motor

General Specifications

□72 mm
24 VDC
5884 mNm

Customized solutions on request.



Electrical Specifications

Model	Voltage	No-load Current	No-load Speed	Rated Current	Rated Speed	Rated Torque	Max. Momentary Tolerance Torque	Gear Ratio
	VDC	A	rpm	A	rpm	mNm		
P80ZGP555-1207-620	12	0.25	7	0.8	5	5884	200	1:620

Typical values at ambient temperature of approx. 20°C. Tolerance ±10%.

Mechanical Dimensions

