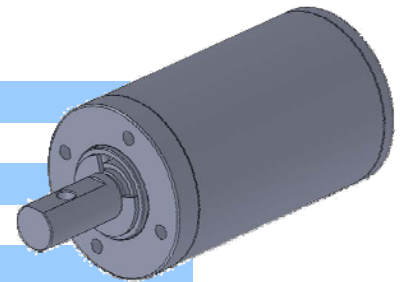


## Planet GearBox 30PF / 30mm



### General Specification

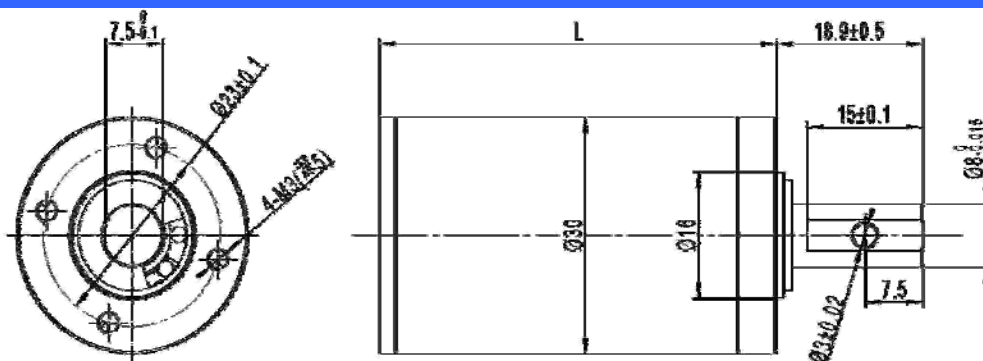
Gear-head material	Metal
Output bearing	Sinter bearing
Axial load	100N
Radial load	45N
End play of shaft	≤0.3mm
Gear material	Plastic/sinter/Metal
Working temperature	-20°C/65°C



### Technology Specification

Model	Reduction ratio	Number of stage	Max.torque N.m		Efficiency	Length
			continuous	intermittent		
30PF-3	3.75	1	0.1	0.3	90%	19.3
30PF-4	4.4	1	0.1	0.3	90%	19.3
30PF-5	5.4	1	0.1	0.3	81%	19.3
30PF-14	14	2	0.5	1.5	81%	29.6
30PF-16	16	2	0.5	1.5	81%	29.6
30PF-19	19	2	0.5	1.5	81%	29.6
30PF-20	20	2	0.5	1.5	81%	29.6
30PF-24	24	2	0.5	1.5	81%	29.6
30PF-29	29	2	0.5	1.5	81%	29.6
30PF-53	53	3	1.5	4	72%	39.9
30PF-62	62	3	1.5	4	72%	39.9
30PF-72	72	3	1.5	4	72%	39.9
30PF-76	76	3	1.5	4	72%	39.9
30PF-84	84	3	1.5	4	72%	39.9

### Mechanical dimensions



### Applicable range

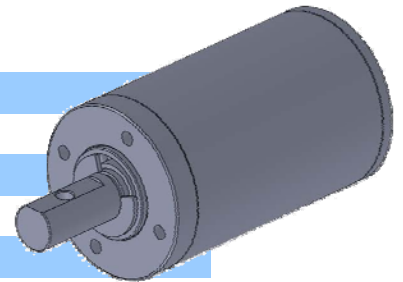
- 1.RS3051,3151,3176,3076 Dc core motor
- 2.28mm brushless motor

## Planet GearBox 30PF / 30mm



### General Specification

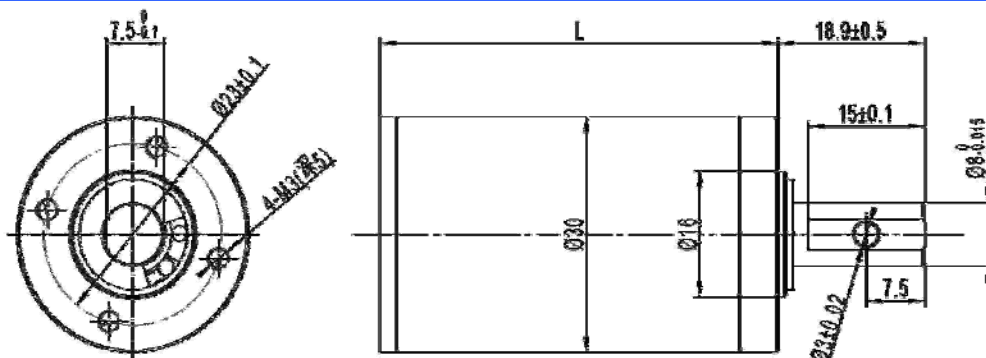
Gear-head material	Metal
Output bearing	Sinter bearing
Axial load	100N
Radial load	45N
End play of shaft	≤0.3mm
Gear material	Plastic/sinter/Metal
Working temperature	-20°C/65°C



### Technology Specification

Model	Reduction ratio	Number of stage	Max.torque N.m		Efficiency	Length
			continuous	intermittent		
30PF-89	89	3	2	5	72%	39.9
30PF-104	104	3	2	5	72%	39.9
30PF-109	109	3	2	5	72%	39.9
30PF-128	128	3	2	5	72%	39.9
30PF-157	157	3	2	5	72%	39.9
30PF-198	198	4	5	12	64%	50.2
30PF-231	231	4	5	12	64%	50.2
30PF-270	270	4	5	12	64%	50.2
30PF-285	285	4	5	12	64%	50.2
30PF-316	316	4	7	20	64%	50.2
30PF-333	333	4	7	20	64%	50.2
30PF-370	370	4	7	20	64%	50.2
30PF-389	389	4	7	20	64%	50.2
30PF-410	410	4	7	20	64%	50.2

### Mechanical dimensions



### Applicable range

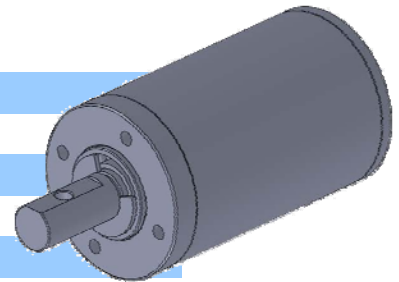
- 1.RS3051,3151,3176,3076 Dc core motor
- 2.28mm brushless motor

**Planet GearBox**  
**30PF / 30mm**



**General Specification**

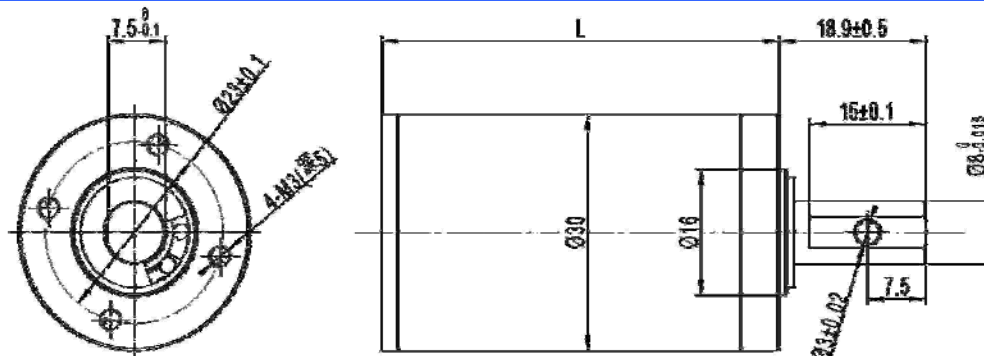
Gear-head material	Metal
Output bearing	Sinter bearing
Axial load	100N
Radial load	45N
End play of shaft	≤0.3mm
Gear material	Plastic/sinter/Metal
Working temperature	-20°C/65°C



**Technology Specification**

Model	Reduction ratio	Number of stage	Max.torque N.m		Efficiency	Length
			continuous	intermittent		
30PF-455	455	4	9	30	65%	50.2
30PF-479	479	4	9	30	65%	50.2
30PF-561	561	4	9	30	65%	50.2
30PF-590	590	4	9	30	65%	50.2
30PF-690	690	4	9	30	65%	50.2
30PF-850	850	4	9	30	65%	50.2

**Mechanical dimensions**



**Applicable range**

- 1.RS3051,3151,3176,3076 Dc core motor
- 2.28mm brushless motor