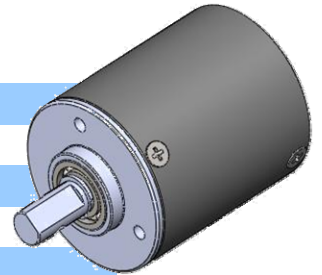


Planet GearBox 40PF / 40mm



General Specification

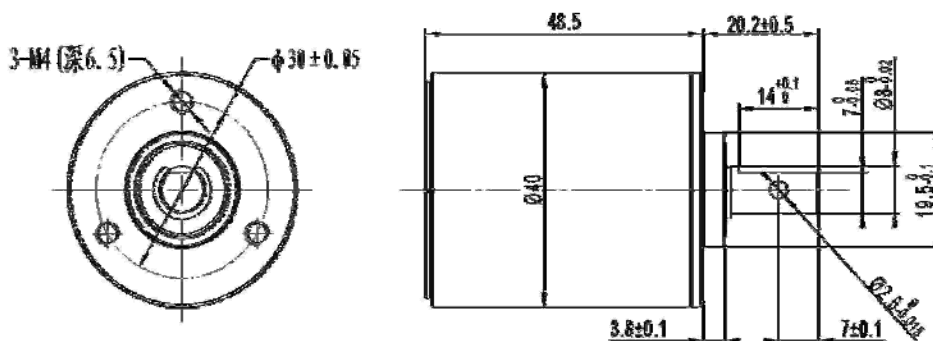
Gear-head material	Sinter
Output bearing	Sinter bearing
Axial load	100N
Radial load	45N
End play of shaft	≤0.3mm
Gear material	Plastic/sinter/Metal
Working temperature	-20°C/65°C



Technology Specification

Model	Reduction ratio	Number of stage	Max.torque N.m		Efficiency	Length
			continuous	intermittent		
40PF-3	3.66	1	0.07	0.4	90%	23.6
40PF-5	5	1	0.1	0.6	90%	23.6
40PF-13	13.44	2	0.3	1.4	81%	31.6
40PF-18	18.33	2	0.4	1.9	81%	31.9
40PF-25	25	2	0.5	2.5	81%	31.9
40PF-49	49.29	3	1	5	72%	40.2
40PF-67	67.22	3	1.3	6.8	72%	40.2
40PF-91	91.66	3	1.8	9	72%	40.2
40PF-125	125	3	2.5	12.5	72%	40.2
40PF-180	180.75	4	3.6	18	64%	48.5
40PF-246	246.48	4	5	25	64%	48.5
40PF-336	336.11	4	6.7	33	64%	48.5
40PF-458	458.33	4	9	45	64%	48.5
40PF-625	625	4	12.5	60	64%	48.5

Mechanical dimensions



Applicable range

- 1.RS540,545,550,555 Dc core motor
- 2.42HB stepping motor
- 3.42BL brushless motor