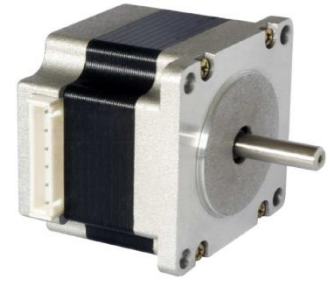


# Hybrid Stepper Motor

## 57BYGH Series

### General Specifications

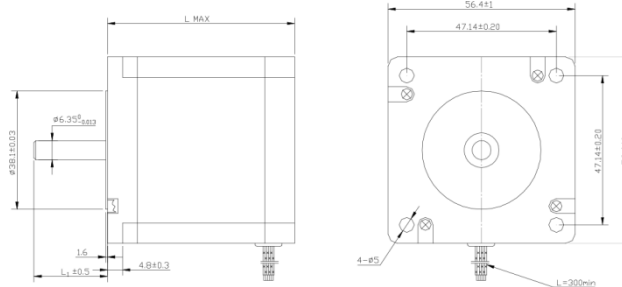
Step Accuracy	± 5%
Temperature Rise	80°C Max
Ambient Temperature Range	-20°C ~ +50°C
Insulation Resistance	100 MΩ Min. 500 VDC
Dielectric Strength	500 VAC 1 minute
<b>Customized solutions on request.</b>	



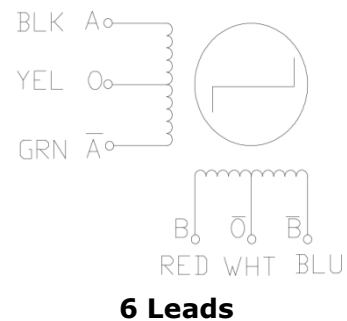
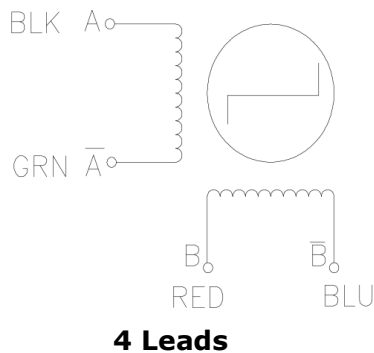
### Electrical Specifications

Model	Step Angle	Motor Length	Rate Voltage	Rate Current	Phase Resistance	Phase Inductance	Holding Torque	Detent Torque	Rotor Inertia	Lead Wire	Motor Weight
	°	L (mm)	V	A	Ω	mH	mNm	mNm	gcm <sup>2</sup>	NO.	kg
57BYGH001	1.8	41	6	0.5	12	20	392.3	0.021	120	4	0.45
57BYGH013	1.8	41	2.7	1.5	1.8	4	392.3	0.021	120	4	0.45
57BYGH201	1.8	51	7.2	0.6	12	25	686.5	0.035	275	4	0.65
57BYGH206	1.8	51	6.6	1	6.6	8.2	706.1	0.035	275	6	0.65
57BYGH218	1.8	51	2.6	2	1.3	4	882.6	0.035	275	4	0.65
57BYGH436	1.8	56	2.4	3.0	0.8	1.4	882.6	0.039	300	6	0.7
57BYGH420	1.8	56	3.6	2	1.8	2.5	882.6	0.039	300	6	0.7
57BYGH502	1.8	67	3.4	2	1.7	3	980.7	0.049	360	6	0.82
57BYGH506	1.8	67	2.4	3	0.77	1	882.6	0.049	360	6	0.82
57BYGH603	1.8	78	8.6	1	8.6	18	1422.0	0.067	480	6	1
57BYGH633	1.8	78	3	3	1	1.6	1323.9	0.067	480	6	1
57BYGH800	1.8	84	7.5	1.5	5	10	1569.1	0.064	530	8	1.13
57BYGH115-003	1.8	115	6.3	3	2.1	9	2451.7	0.087	810	4	1.55
57BYGH115-007	1.8	115	4.2	4.2	1	2.3	1912.3	0.087	810	8	1.55

### Mechanical Dimensions



### Wiring Diagram



# Hybrid Stepper Motor

## Pulse-Torque Characteristics

