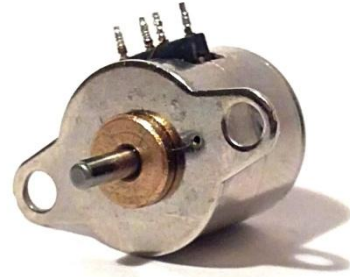


## SM-series

### Miniature PM Stepping Motor

Ø10 mm  
 18° /20 steps per revolution  
 5V drive voltage  
 Up to 15 g-cm  
 Customization on request



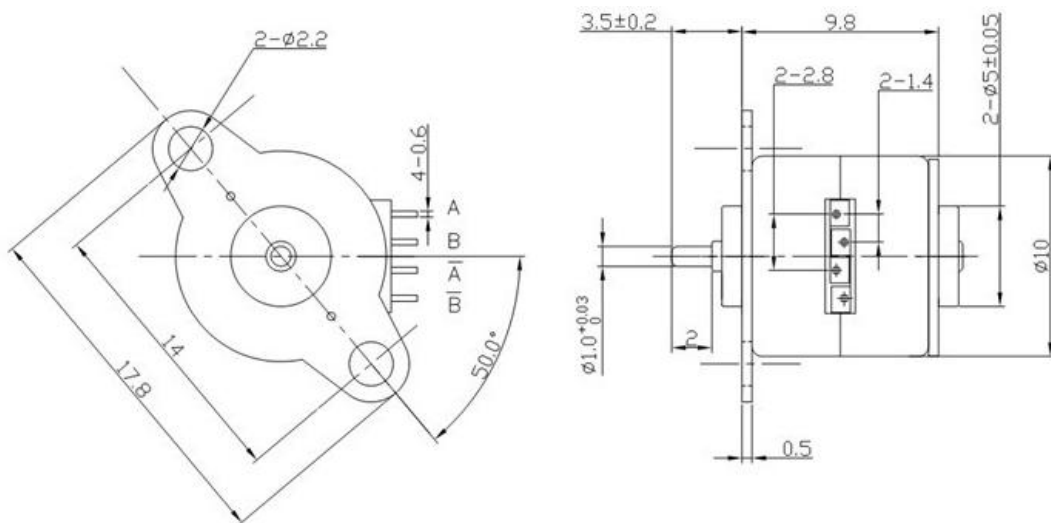
### Electrical Characteristics

Model	Drive Voltage	Drive Mode	Step Angle	Resistance	Holding Torque	Max Pull-Out Pulse Rate
	V	Bi-polar	deg	Ω	g-cm	PPS
SM1001	5	2-2	18	45±7%	12	1500
SM1002	5	2-2	18	15±7%	12	2000
SM1003	5	2-2	18	45±7%	12	1500
SM1004	5	2-2	18	38±7%	15	1500
SM1005	5	2-2	18	15±7%	12	2200
SM1006	6	2-2	18	15±7%	12	2500
SM1008	5	2-2	18	12.2±7%	13	2200
SM1009	5	2-2	18	45±7%	12	1500

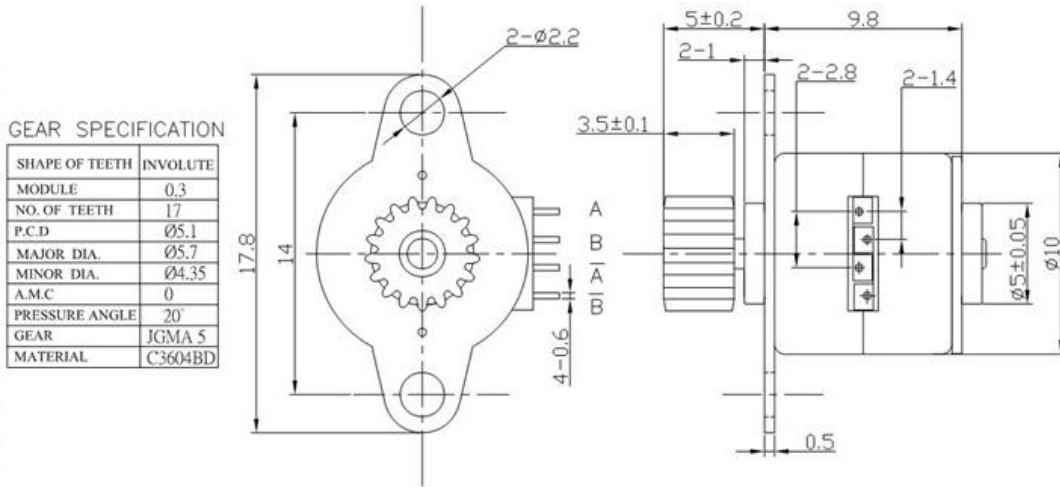
Typical values at ambient temperature of approx. 20°C. Tolerance ±10%.

### Dimensions (mm)

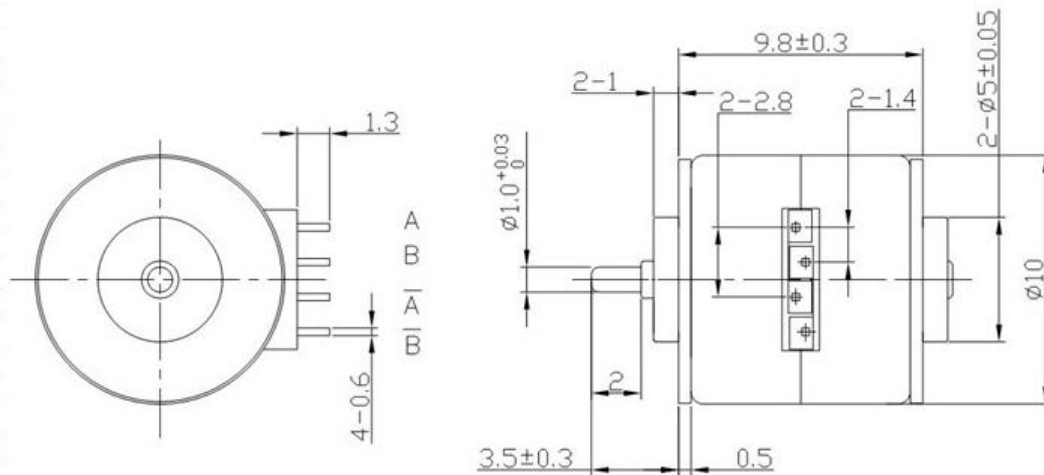
#### SM1001



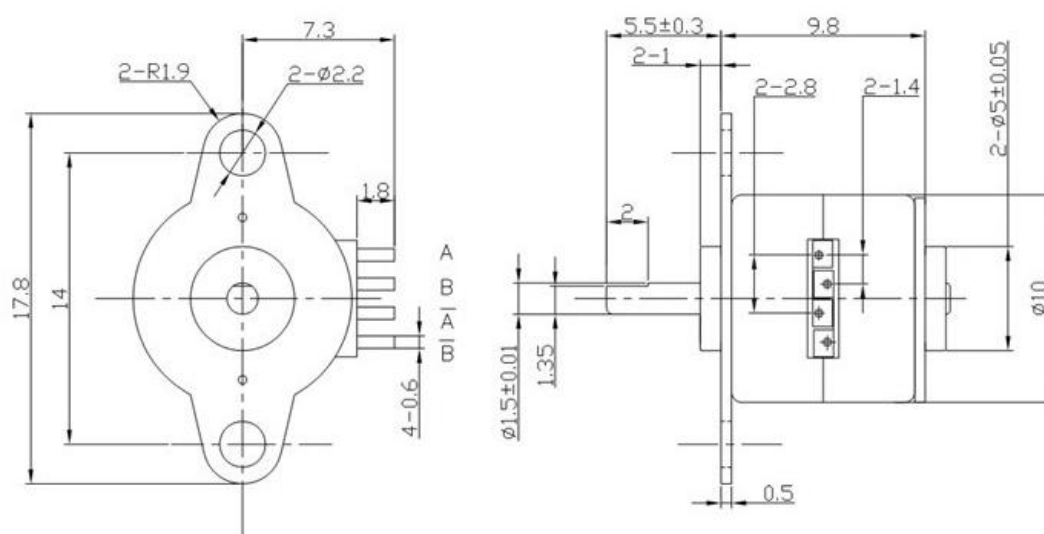
## Dimensions, cont. SM1002



## SM1003



## SM1004



**PROMOCO**  
www.promoco.se

Promoco Scandinavia AB  
Tel: 08-792 06 90  
Fax: 08-792 20 90  
info@promoco.se  
Box 1313  
183 13 Täby

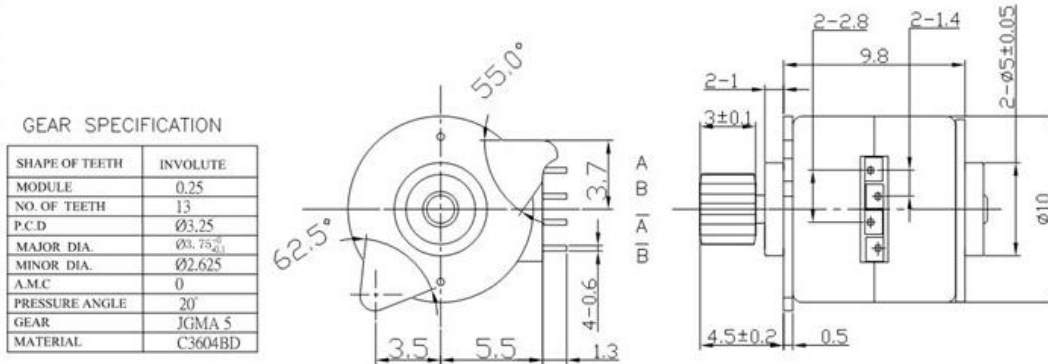
[www.promoco.se](http://www.promoco.se)

The specifications are believed to be accurate and reliable. However, the suitability has to be determined for a specific application. Specifications subject to change without notice.

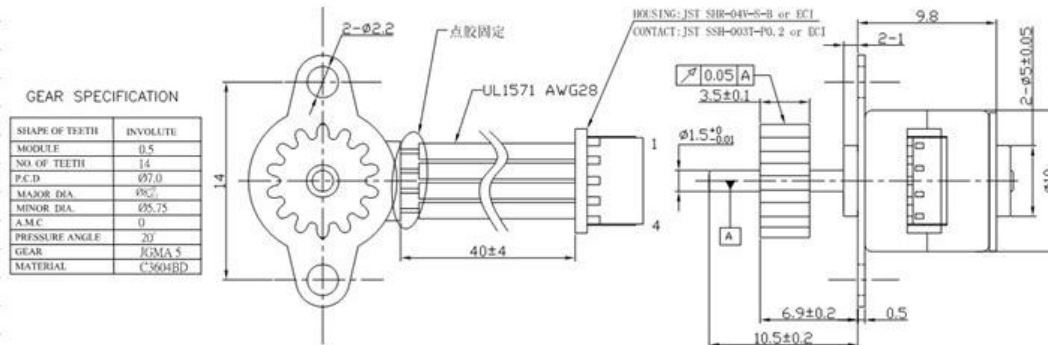
# PM Stepping Motor

Ø10 mm

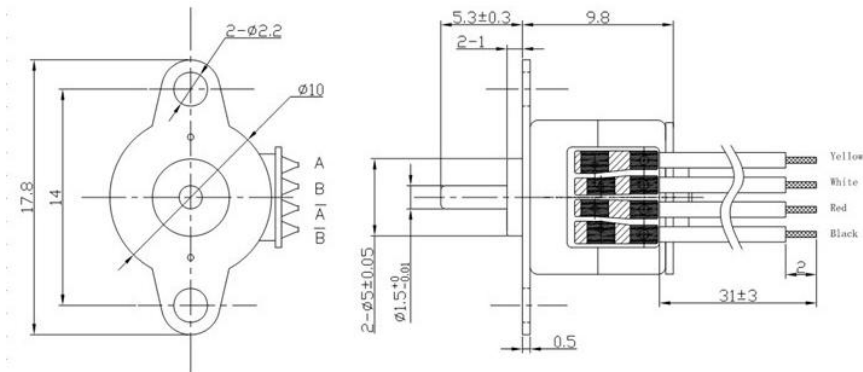
## Dimensions, cont. SM1005



## SM1006



## SM1008



## SM1009

